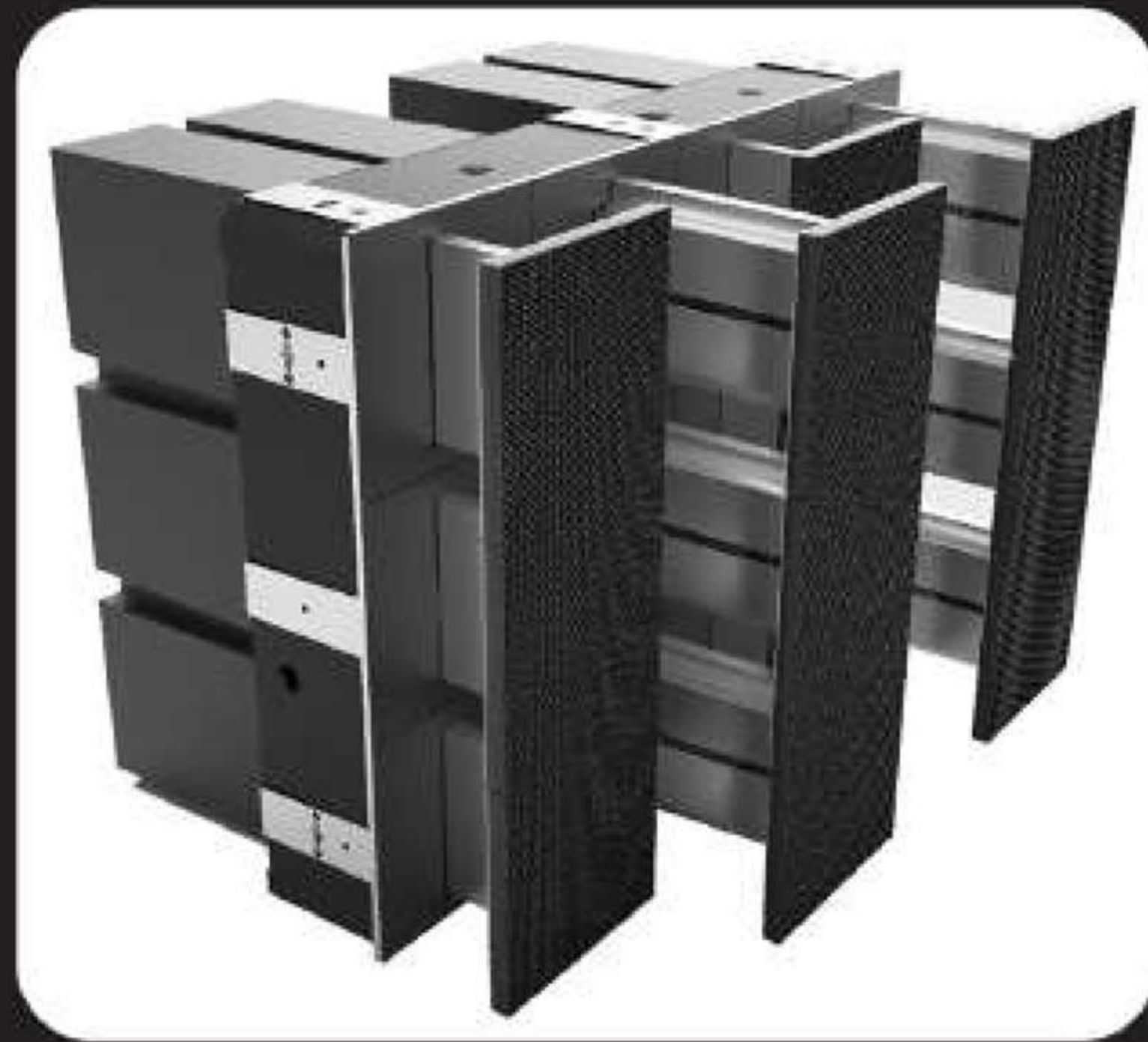
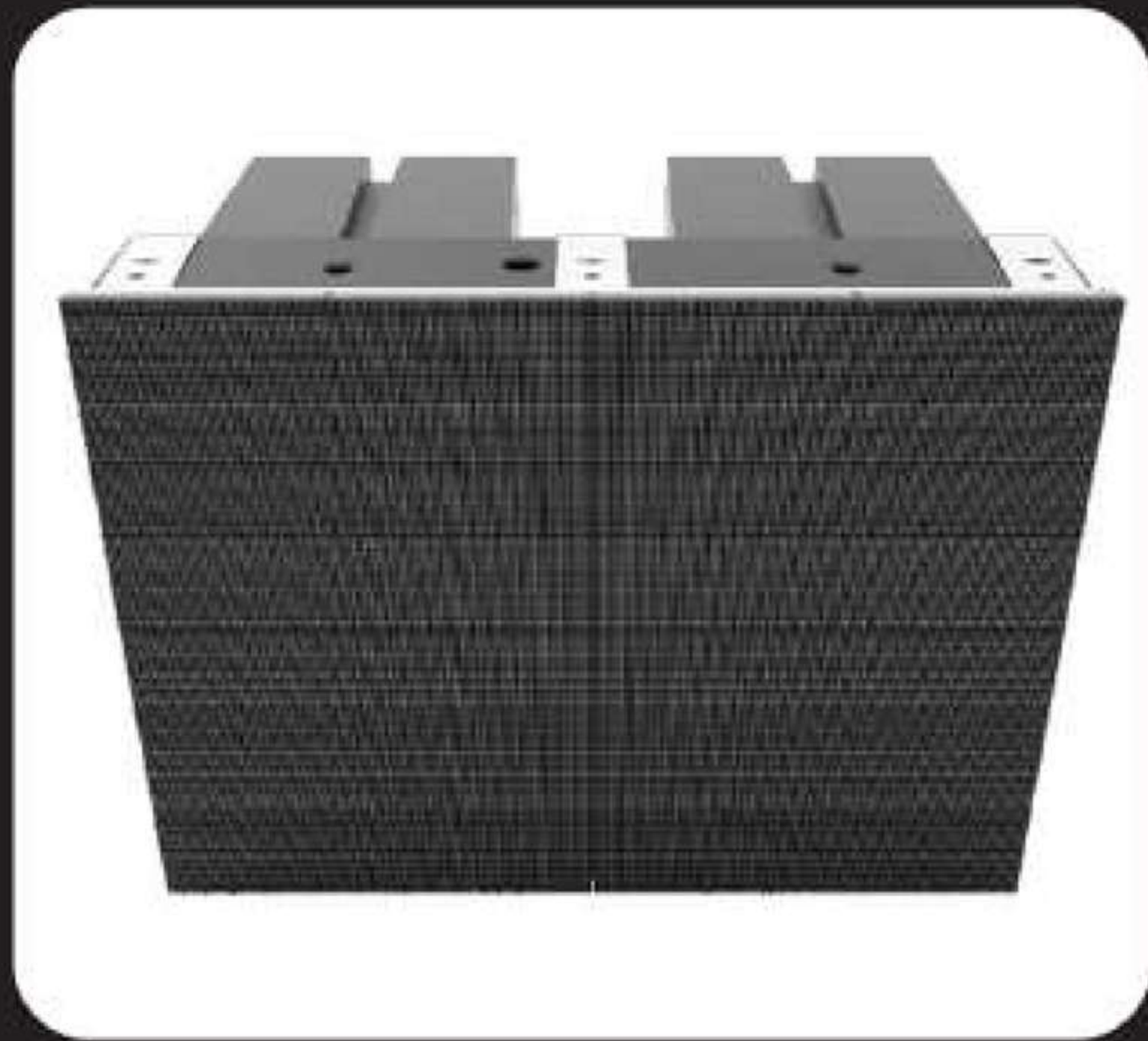


Unleashing Motion Kinetic led

The Integrated motion sensors in the LED Wall create synchronised, choreographed movements, creating effects like waves, ripples & enhanced visuals. Its sophisticated software provides a seamless integration of all the elements making it unique experiences for users.

The Kinetic LED Wall aims to redefine visual & tactile interaction through creativity & innovation



Shivam Video

Delhi, Mumbai, Bangalore, Goa, Kolkata, Hyderabad

+91 9810335073, 8750335073

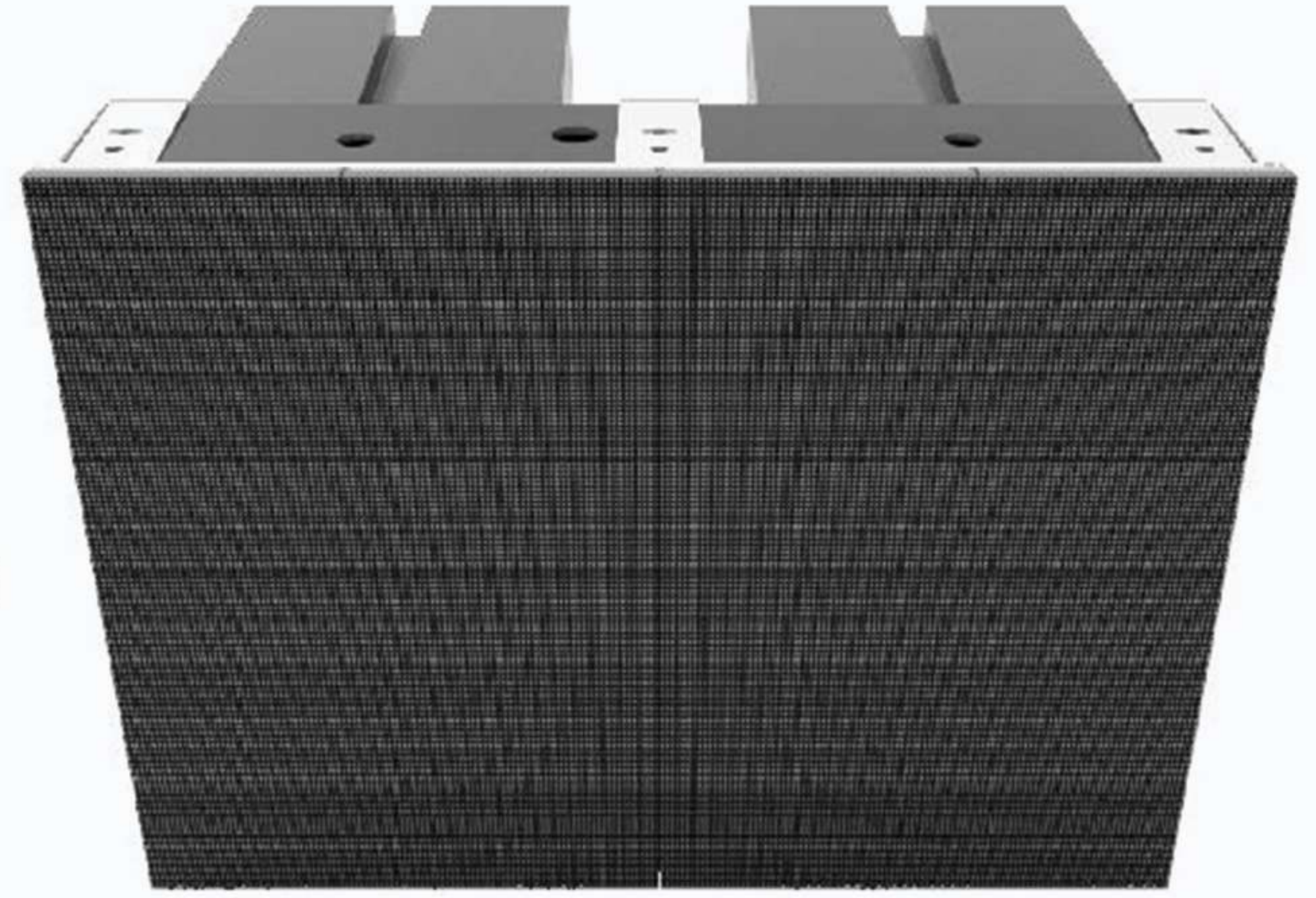
www.shivamvideo.in

sales@shivamvideo.com

Kinetic led Wall

Provides Immersive & Interactive Experiences

- . Die-Cast aluminium cabinet design
- . Quick Installation & Dismantling .



Main Specs		Indoor Type	
Model		KINETIC 1.9MM PRO	
Module	LED Pixel	Indoor-1.9mm GOB	
	Module Dimension (W x H) (mm)	160 x 160	
	Unit Display Dimension (W x H) (mm)	160 x 160	
	Cabinet Resolution	320 x 240 px	
	Unit Resolution (px) (W x H)	80 x 80	
	Cabinet Size (mm)	640 x 480	
Screen Brightness (cd/m ²)		<1700	
Mechanical	Thickness at Back Position (mm)	320	
	Thickness at Forward Position (mm)	520	
	Max. Forward stroke (mm)	200	
	Max. Distance between Gaps (mm)	1 (0.5~1.5)	
	Max. Forward Speed (mm/s)	600	
	Max. Forward - Back cycle time (s)	0.4	
	Unit Cabinet Weight (Kg)	24	
Whole	Power Supply		Three Phase/Five Wire
	Enviroment	Ambient Temperature	0-40°(non-frost)
		Ambient Humidity	No rainproof, <70% (non dew)
		Enviroment Requirements	Indoor, no etchant gas, no inflammable gas, no oil mist or dust
Heat Dissipation		Open self-cooling (with fon cooling)	

Shivam Video

Delhi, Mumbai, Bangalore, Goa, Kolkata, Hyderabad

+91 9810335073, 8750335073

www.shivamvideo.in

sales@shivamvideo.com